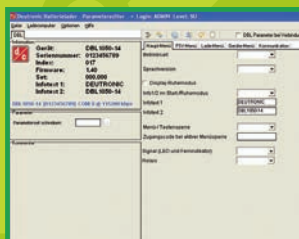
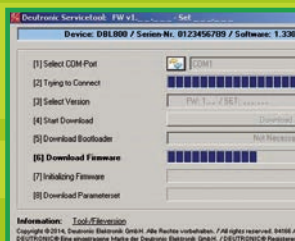




Accessories Battery Chargers



worldwide
Support + Service

DEUTRONIC 
Elektronik GmbH EDWANZ group

1. Transport System

► Transport System

For one battery charger (standard version)

Type: MPC4 (f.e. DBL1600)

Dimensions transport system (HxWxD): 100(202)x51x62 cm



Art.-No. 140526

Art.-No. 140526/01

Art.-No. 140526/21

Transport system options

incl. signal lamp (height 100 cm)

incl. signal lamp (height 20 cm)



140526

140526/21

140526/01

► Transport System for B-Housing Version



Art.-No. 116202

Type 1 for one charger



Art.-No. 116203

Type 2 for two chargers
Option: Incl. cable reel

2. Mounting

► Wallmount

For one charger (standard version)

Type: MPC4 (f.e. DBL1600)



Art.-No. 140551

► Wallmount with cable holder

Wallmount with cable bracket incl. mounting and fastening materials for DBL series in B-Housing Version



Art.-No. 140418

► Wallmount D-MOUNT-BRACKET

Two wall mounting brackets for:

Type: DBL300, DBL500, DBL700, DBLW1200

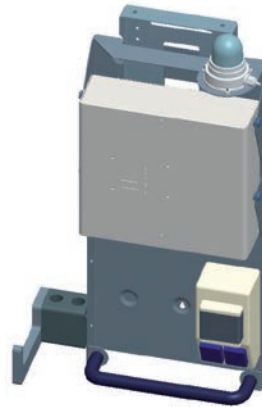


Art.-No. 140066

► Basic Carrier / Rework Station

Basic Carrier for DBL MPC4 chargers,
B-Housing Version

incl. EU socket combination – not mounted
other socket combination on request



Art.-No. 140422

Art.-No. 140422/10

3. Balancer

► Cable spring balancer with locking device

Load 1,5...3 kg

including conductor holder for round cables



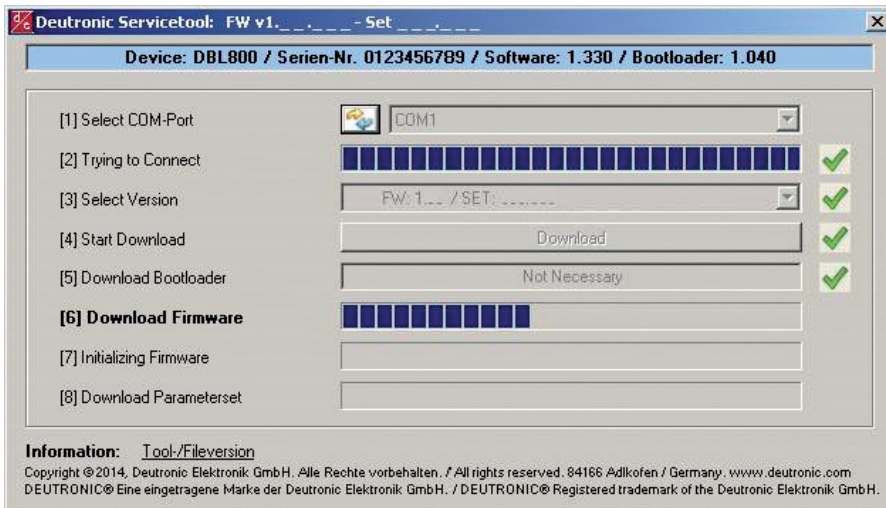
Art.-No. 140061

Art.-No. 140061/1

4. Software

► Deutronic® ServiceTool / OCT

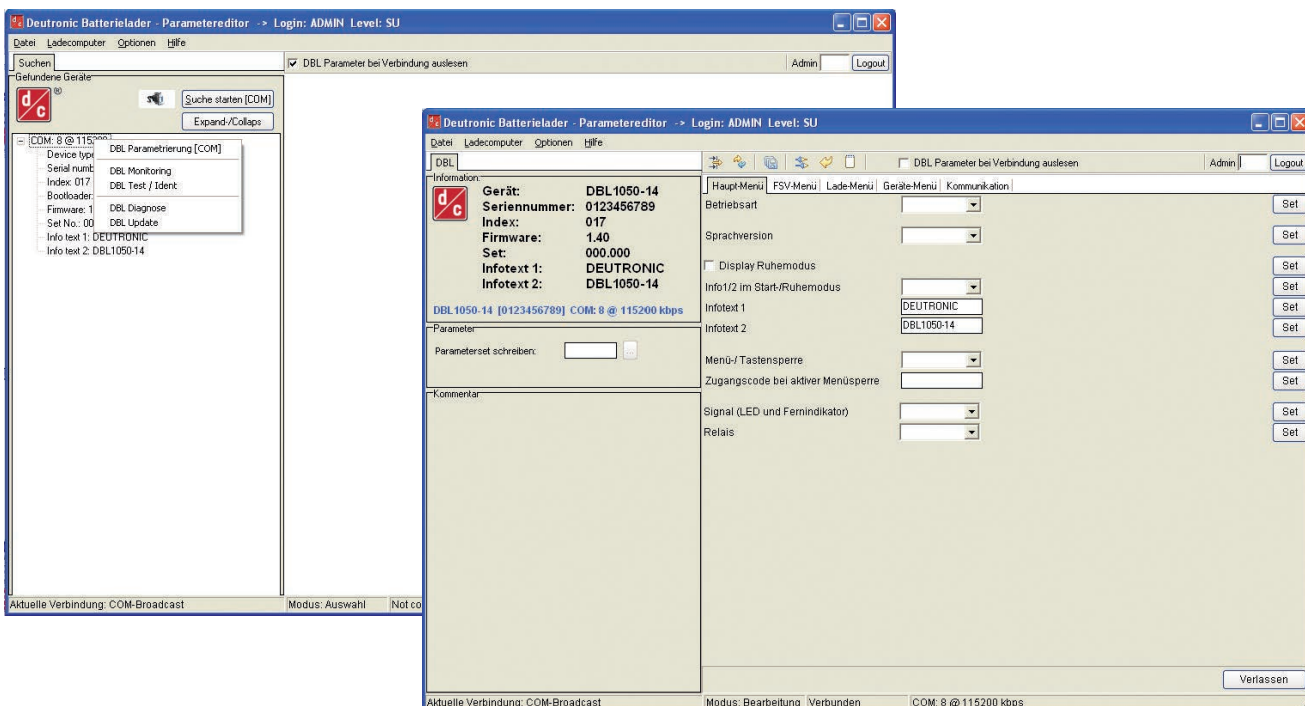
Software for a quick and easy update of customer specific firmware (inclusive parameter) via RS232 or USB. Link available via e-mail.

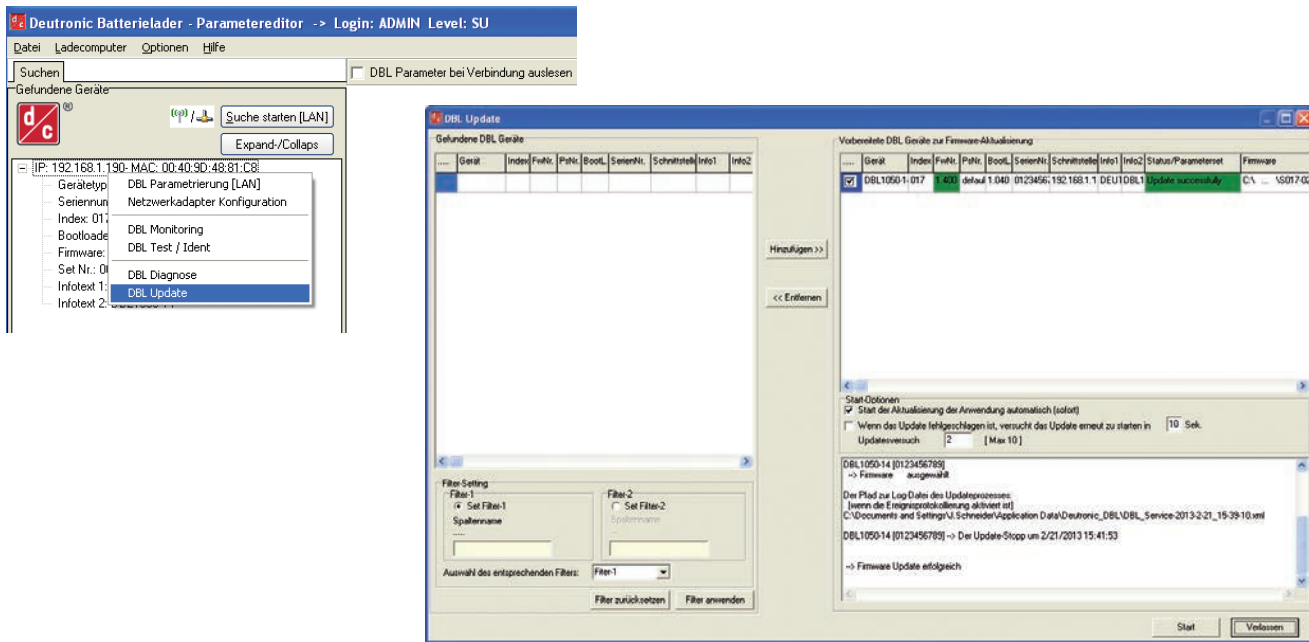


Art.-No. on request

► D-TOOL ParameterEdit MPC4

For PC based parameterization of the DBL MPC4 battery chargers and configuration of the D-ADAPT-MPC4 Network Adapter Series via RS232/USB or Ethernet/WLAN





For DBL battery chargers with MPC4 controller board and D-ADAPT-MPC4 Network Adapter Series*

Single-seat license (Microsoft® Windows® Operating Systems: Windows® XP, Windows® Vista or Windows® 10)

Without data cable

Art.-No. 140787

* D-ADAPT-MPC4 ETHERNET (see page 9)

* D-ADAPT-MPC4 WLAN ENTERPRISE (see page 9)

Art.-No. 140344

Art.-No. 140343

5. Signals + Communication

► External Signal Lamp

For clear signaling of the charging status on production lines and workshops

Signal Lamp for charging computers

Type: MPC4 (f.e. DBL1600)



► with 2.5 m cable length (without acoustic signaling)

Acoustic signaling with signal "green"

Acoustic signaling with signal "yellow"

Acoustic signaling with signal "red"

Art.-No. 107492

Art.-No. 107492/20*

Art.-No. 107492/21*

Art.-No. 107492/22

► with 0.5 m cable length (without acoustic signaling)

Acoustic signaling with signal "green"

Acoustic signaling with signal "yellow"

Acoustic signaling with signal "red"

Art.-No. 107492/1

Art.-No. 107492/10*

Art.-No. 107492/11*

Art.-No. 107492/12

(* minimum order quantity:
5 pieces)

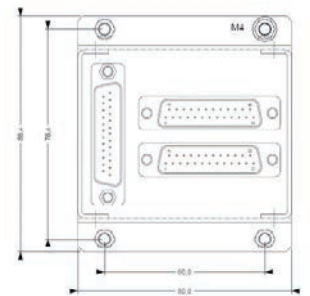
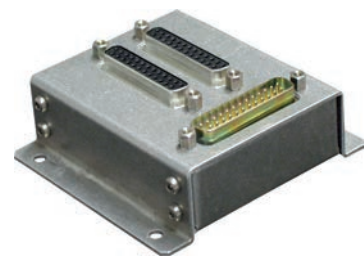


► **D-ADAPT-SBB2X25 T-Adapter**

The T-Adapter enables the utilisation of the further functions of the 25 pole DBL interface while at the same time the external signal lamp (DBL-SIG-LR) is connected to the DBL.

Type: MPC4 (f.e. DBL1600)

Art.-No. 140334



► **D-ADAPT-SB25 Data Cable**

Data cable male-female, 25 pole / 1.8 m

Art.-No. 140337

► DBL MPC4 Network Adapter for ETHERNET and WLAN

Note: The industrial network adapter is plugged directly to the DBL interface and requires no additional power supply.

Type: MPC4 (f.e. DBL1600)

► D-ADAPT-MPC4 WLAN ENTERPRISE



D-ADAPT-MPC4 WLAN enables the DBL battery charger series with MPC4 controller board to be connected to a Wireless LAN network (IEEE 802.11b/802.11g) for data transmission with max. 11 mbps. The adapter supports among others WEP/WPA/WPA2 and RADIUS server authentication / PSK (pre-shared keys).

Art.-No. 140343



Battery charger not included in delivery

► D-ADAPT-MPC4 ETHERNET



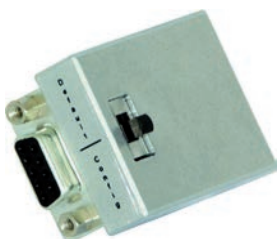
D-ADAPT-MPC4 ETHERNET enables the DBL battery charger series with MPC4 controller board to be connected to a 10/100Mbit Ethernet network (TCP/IP or UDP).

Art.-No. 140344



Battery charger not included in delivery

► D-ADAPT-MPC4 Service Adapter



The D-ADAPT-MPC4 Service Adapter is connected via the 6-pole service interface to a D-ADAPT-MPC4 ETH / WLAN Enterprise network adapter and enables so the connection of a PC via RS232 interface (9-pole D-SUB socket) to configure the network adapter.

Art.-No. 140345



Battery charger and RS232 cable not included in delivery

The Service-Adapter is compatible with the following DBL MPC4 network adapter:

D-ADAPT-MPC4 WLAN ENTERPRISE (Art.-No. 140343)

D-ADAPT-MPC4 ETHERNET (Art.-No. 140344)

► D-ADAPT Starter Kit

The adapter starter-kit contains the D-ADAPT-MPC4 Service Adapter ([Art.-No. 140345](#)) as well as the PC-Tool Tool D-TOOL ParameterEdit MPC4 ([Art.-No. 140787](#)) and electively:

► D-ADAPT-MPC4 WLAN ENTERPRISE

Art.-No. 140343/1

For wireless connection of charging computers of the DBL series with MPC4 controller board

► D-ADAPT-MPC4 ETHERNET

Art.-No. 140344/1

To connect charging computers of the DBL Series with MPC4 controller board to an Ethernet network

6. Connection Technology

► Mains Cables

Mains cable Europe
Schuko according to IEC-60320 C13



1.8 m Art.-No. 140503

3.0 m Art.-No. 140502

5.0 m Art.-No. 140501

Mains cable for USA
according to NEMA 5-15



3.0 m Art.-No. 140519

5.0 m Art.-No. 140504

Mains cable for Australia
according to AS3112



2.5 m Art.-No. 140515

5.0 m Art.-No. 140416

Mains cable for UK
according to BS1363



2.5 m Art.-No. 140517

5.0 m Art.-No. 140413

Mains cables international (4 SET)

5.0 m Art.-No. 140415

Set consists of 4 mains cables

Europe-Schuko • USA / Canada / Japan

UK / Ireland / Hong Kong • Australia / New Zealand

Mains cables international (3 SET)

5.0 m Art.-No. 140420

Set consists of 3 mains cables

USA / Canada / Japan • UK / Ireland / Hong Kong

Australia / New Zealand

► **Charging Cables**

16 mm² / 100 m reel

Cable for battery charger 16 mm²

Art.-No. 140509

► **Standard**

Cable / Length	Connection	Cable Clamps	Art.-No.
16 mm ² / 3.0 m	Welding connectors	Standard 200A	140707
16 mm ² / 5.0 m	Welding connectors	Standard 200A	140708
25 mm ² / 5.0 m	Welding connectors	Standard 200A	140710

► **Special Variants**

Cable / Length	Connection	Cable Clamps	Art.-No.
10 mm ² / 2.0 m	Welding connectors	Standard 80A	140684
16 mm ² / 7.0 m	Welding connectors	Standard 200A	140712
16 mm ² / 10.0 m	Welding connectors	Standard 200A	140721
16 mm ² / 12.0 m	Welding connectors	Standard 200A	140709
16 mm ² / 15.0 m	Welding connectors	Standard 200A	140708/9
16 mm ² / 3.0 m	Welding connectors	angled 200A	140686
16 mm ² / 5.0 m	Welding connectors	angled 200A	140687
25 mm ² / 5.0 m	Welding connectors	Pressed cable lug M8	140677
16 mm ² / 3.0 m	Cable lug M10	Standard 200A	140719

► Cable clamps 200A, completely isolated

For professional applications

Standard red

black



Art.-No. 140557

Art.-No. 140558

Set angled red and black



Art.-No. 140549

► Charging cable coupling

Charging cable coupling (plug)

Charging cable coupling (socket)



Art.-No. 140556

Art.-No. 140555

► Welding connector

Socket / plug for mounting in your own application

Mounting plug (minus)

Mounting socket (plus)



Art.-No. 140563

Art.-No. 140562

► Welding plug / Charging cable coupling set

Set includes Art.-No. 140555, 140556, 140562 and 140563



Art.-No. 140508

► Mains connection kit

For DBL3000/3W and DBL5500/3W



Art.-No. 140742

► HARTING-plug

HARTING-plug for all DBLxxx/3W HAN-versions (mains connection)



Art.-No. 140442

7. Miscellaneous

► Spare Parts

Rubber foot for DBL800

Art.-No. 140726

Hinged feet frontside for Type: MPC4 (f.e. DBL1600)

Art.-No. 140731

Carrying handle for product groups:

Type: MPC4 (f.e. DBL1600) and DBL300, DBL500, DBL700, DBLW1200

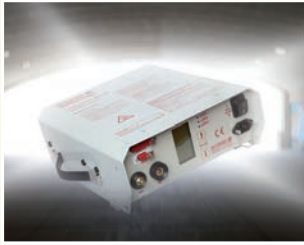
(Attention – handle is not generally mountable! The basic article needs to be prepared ex factory.)

Art.-No. 140728



Further spare parts on request

Power and More



Battery Chargers



Power Supplies



Test Systems



DC/DC Converter



Motor Controller



worldwide
Support + Service

DEUTRONIC 
Elektronik GmbH EDWANZ group

Technical modifications and mistakes reserved. Products are described by information contained in catalogs and data-sheets. It is not be considered as assured qualities.

IMPORTANT SAFETY NOTE:

In all installations, the applicable safety guidelines are observed. In particular, cable (mains cable and charging cable!) exclusively used in the completely unwound state, to ensure adequate cooling. In any case of ware, the affected lines will be renewed.



Deutronicstraße 5 | D-84166 Adlkofen/Germany
Tel.: +49 (0)8707 920-0 | Fax: +49 (0)8707 1004
E-Mail: sales@deutronic.com | www.deutronic.com